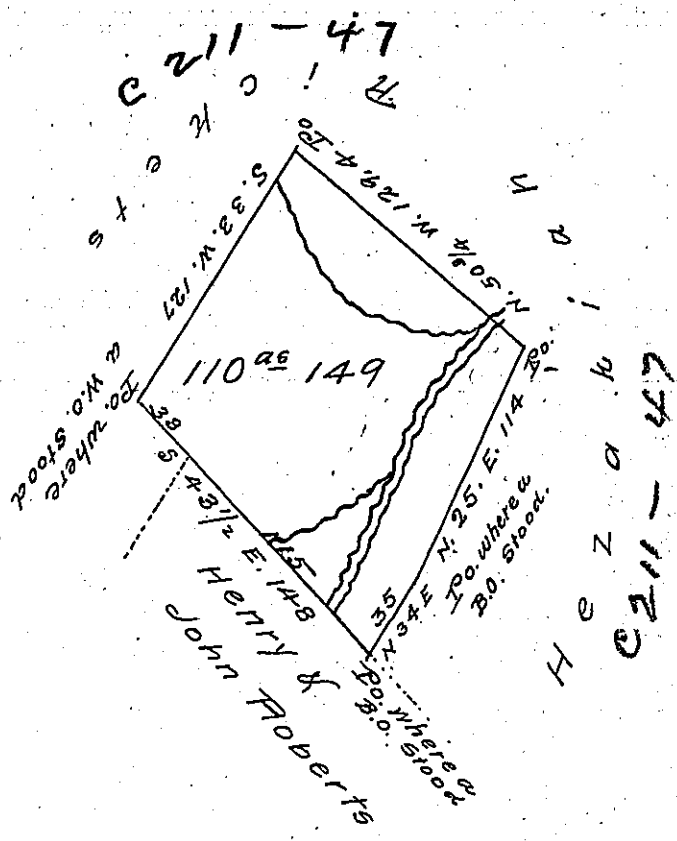


See - D 49-215



Situate in Shirley township Huntingdon County containing
 One hundred and ten acres & 149 perches and allowance &c.
 Surveyed the 2nd day of November 1852 in pursuance of
 a Warrent granted to Hezakiah Rickets the 10th day
 of June 1851 for 110 acres - the courses in the above draft
 are in accordance with the Meridian line established
 by the County Commissioners

William Christy, C.S.

To J Porter Brawley
 Surveyor General of Penn

IN TESTIMONY that the above is a copy of the original remaining on file in
 the Department of Internal Affairs of Pennsylvania, made
 conformably to an Act of Assembly approved the 16th day of
 February, 1833, I have hereunto set my Hand and caused
 the Seal of said Department to be affixed at Harrisburg,
 this ninth day of October 1906

James N. Purvis
 Secretary of Internal Affairs.